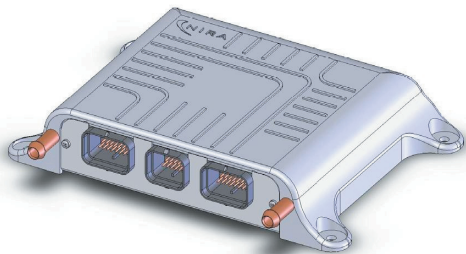


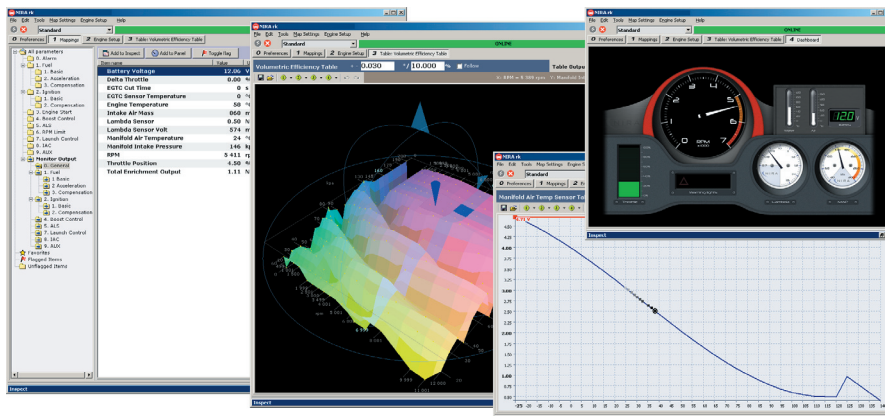
## NIRA edc/cr

- Powerful common rail diesel engine management system



NIRA edc/cr is a powerful engine control unit designed to control modern diesel engines with the efficient common rail technology. NIRA edc/cr comes complete with an application tool, NIRA rk, for loading of software program, tuning of engine data, monitoring etc. Together they constitute a system that offers the operator full access to and control of the engine functions.

Featuring support for advanced fuel injection strategies with multiple injections per stroke, NIRA edc/cr enables the engine tuner to reach maximum performance while maintaining desirable characteristics such as quick engine response time and precise control of torque output. NIRA edc/cr is also designed to handle multiple crankshaft and camshaft trig patterns.



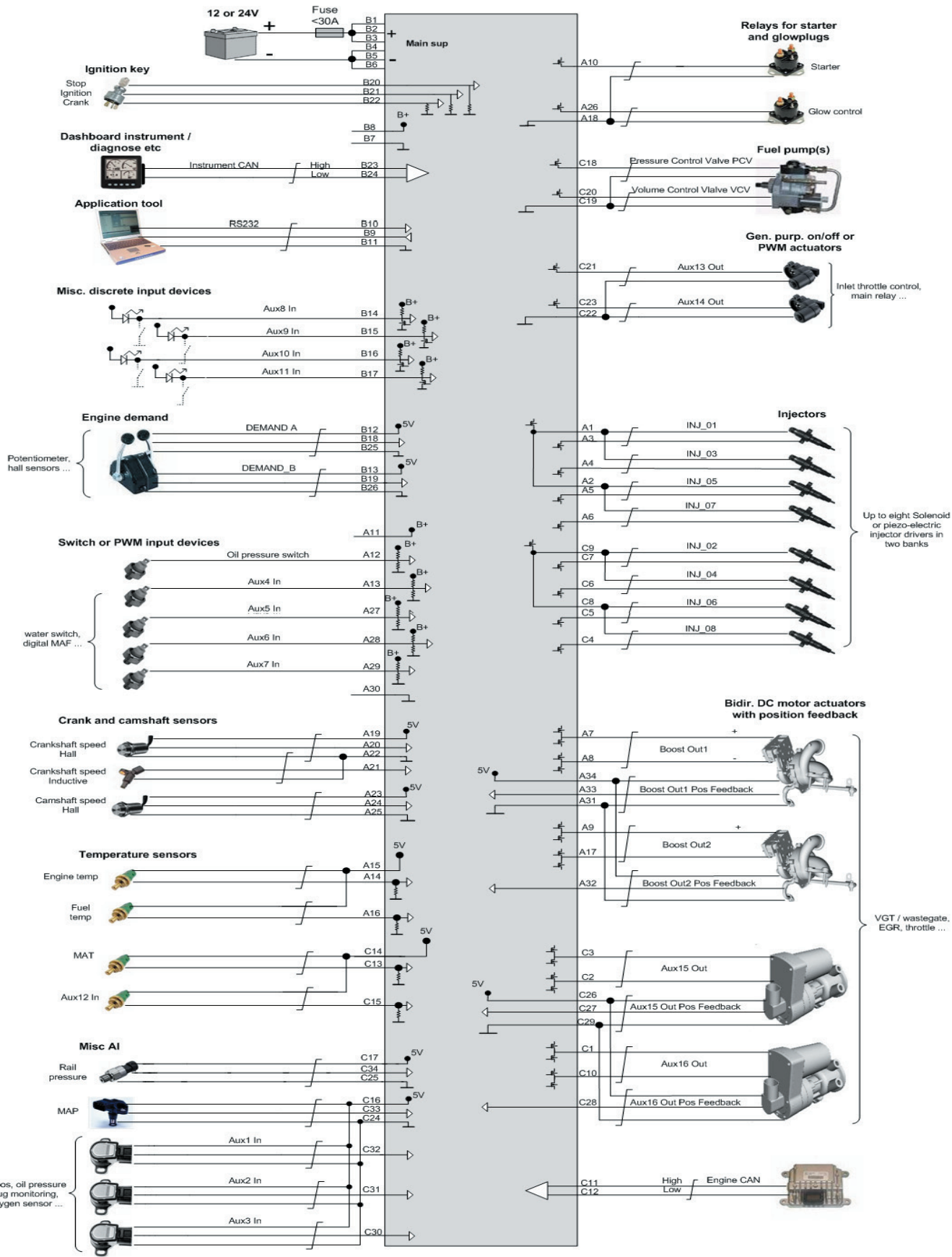
### Design Features

- Rugged design
- Extensive I/O interface with FlexiPorts™ Control
- Up to Eight Cylinders
- Size: 250x182x48 mm
- CAN Communication

### High Performance Functions

- Dual Closed Loop Boost Pressure Control (VGT or Wastegate)
- Sequential Turbo Control
- Rapid Torque Control

Nira Control AB develops and sells advanced electronic control systems designed for use in harsh environments. Through NIRA Motorsport, Nira Control AB caters the racing industry with high performance engine control units. For more info, see [www.nira.se](http://www.nira.se)



**Nira Control AB**  
 NIRA Motorsport  
 Höglidsvägen 36  
 182 47 Enebyberg

[www.niramotorsport.com](http://www.niramotorsport.com)  
[www.nira.se](http://www.nira.se)